

TEW-410APBplus

54Mbps 802.11g Wireless Access Point + Bridge

Quick Installation Guide

Version 3.3.04



Copyright ©2004. All Rights Reserved. TRENDware International, Inc.

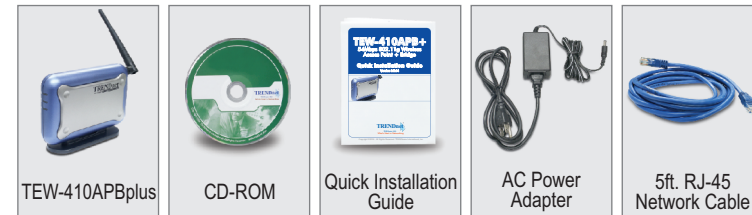
1. Prepare for Installation

Thank you for purchasing the TEW-410APBplus. With this Access Point, you will be able to share your files and resources between wired and wireless PCs.

This guide will help you set-up and configure your Access Point. Following the installation instructions should be quick and easy. If you run into problems, please refer to the Troubleshooting section or more detailed information from the User's Guide on the CD-ROM. If you need further technical support, please visit www.TRENDNET.com or contact us by phone.

Verify Package Contents

Please make sure you have everything in the box:



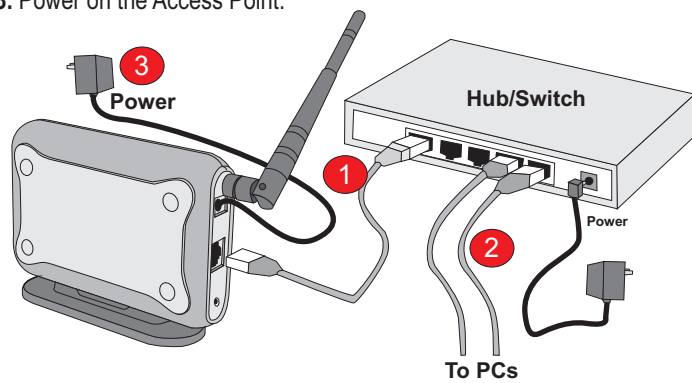
Verify Equipment

Before installing the Access Point, you should have:

1. A Hub or Switch connecting your existing network.
2. A working Wired PC connected to the Hub/Switch or a working Wireless PC.
3. A web browser such as Internet Explorer (5.0 or higher) or Netscape Navigator (4.7 or higher).
4. TCP/IP protocol installed on each computer.

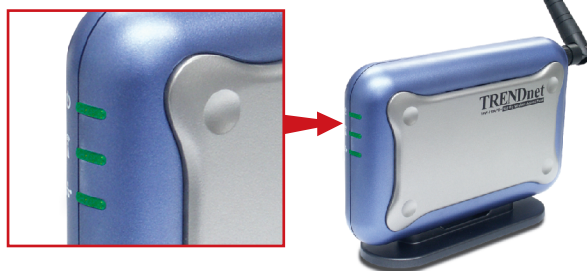
2. Install Hardware

1. Connect the RJ-45 network cable from the Access Point to any port on the Hub or Switch.
2. For Wired PC setup, please connect another RJ-45 network cable from the PC to the same Hub or Switch.
3. Power on the Access Point.



Verify Hardware Installation

Make sure the following Access Point LEDs are on.



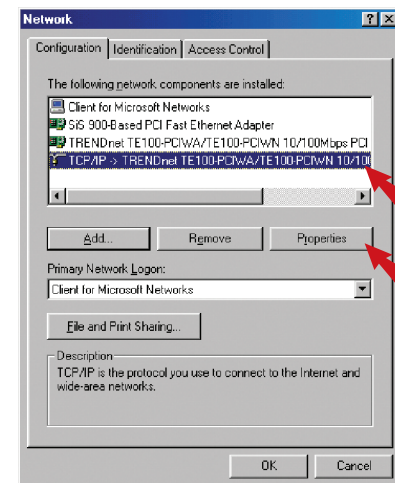
2

3. Configure the computer's TCP/IP Settings

The Access Point has a default IP address 192.168.1.250, therefore to be able to access and configure the Access Point, the computer's TCP/IP settings need to be changed.

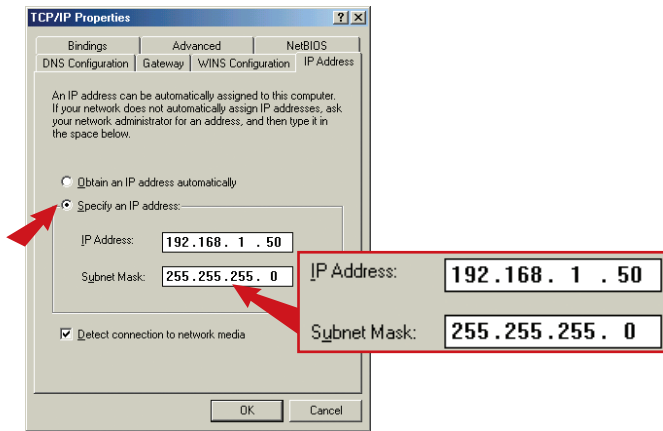
Windows 95/98/98SE/ME

1. Find the **Start** button located on Desktop.
2. Click **Start**; click **Settings** and then click on **Control Panel**.
3. Double-Click the **Network** Icon and the Network Properties box will appear
4. Under the **Configuration** tab, locate and select **TCP/IP** with the corresponding network card. Then click on the Properties button and the TCP/IP Properties window will appear.

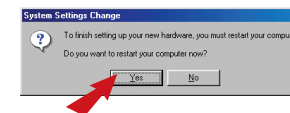


3

5. Under the **IP Address** tab, click on **Specify an IP address** and enter 192.168.1.50 for the IP address and 255.255.255.0 for the Subnet Mask and click **OK**.



6. Click **OK** on the Network Box.
7. At this point, the installation may require files from your Windows CD-ROM. If this happens insert Windows CD-ROM into your CD-ROM drive and select the CD-ROM drive to load the files.
8. After the files load, the System Settings Change message appears; click **Yes** to reboot your system.



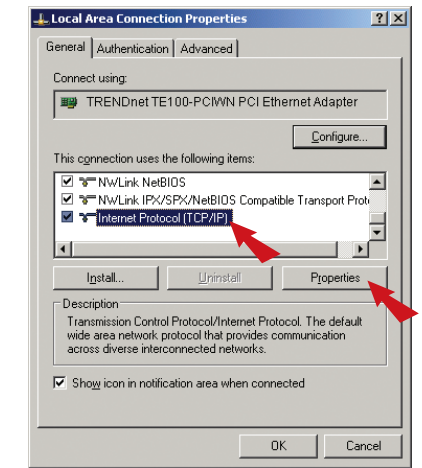
Note: If the message does not appear, you need to go to Start and click Restart.

9. Now your computer is ready to access and configure the Access Point.

4

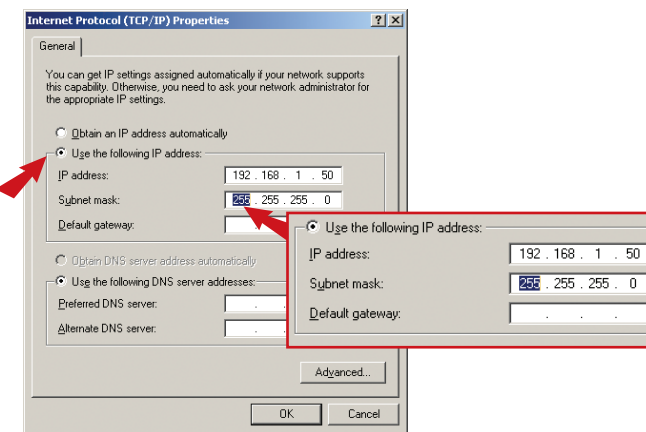
Windows 2000/XP

1. Find **Start** button located on Desktop.
2. Click **Start**; click **Settings** and then click on **Control Panel**.
3. Double-Click the **Network** Connection Icon.
4. Right-Click on the **Local Area Connection** icon and then click on Properties. The Local Area Connection Properties box will appear.



5

5. Under the **General** tab, locate and select Internet Protocol TCP/IP and then click **Properties**. The Internet Protocol (TCP/IP) Properties box will appear.

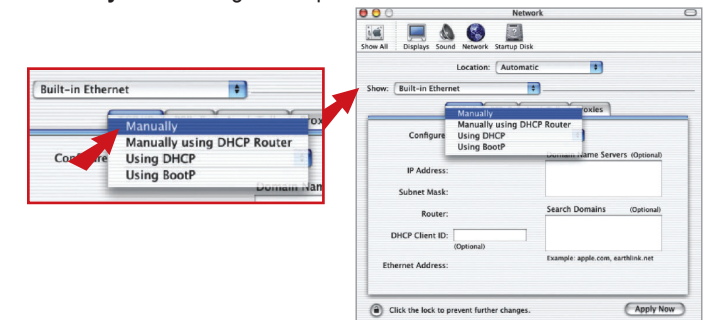


6. Click on **Use the following IP address**; then enter 192.168.1.50 for IP Address and 255.255.255.0 for Subnet, then click **OK**.
7. Click **OK** on the Local Area Connection Properties box to close.
8. Now your computer is ready to access and configure the Access Point.

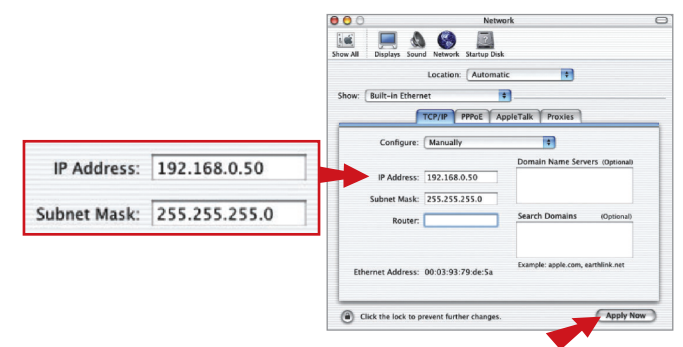
6

Mac OS X

1. Go to the Apple Menu, click on Network and select System Preferences.
2. Select **Built in Ethernet** in the Show pull-down menu and select **Manually** in the configuration pull-down menu



3. Input a valid IP address and subnet mask. (The IP address must be within the same range as the TEW-410APBplus. The IP Address of the TEW-410APBplus is 192.168.1.250 so you can assign 192.168.1.50 and 255.255.255.0 as subnet mask for your computer.)
4. Click **Apply Now** and continue to the Configuration section.



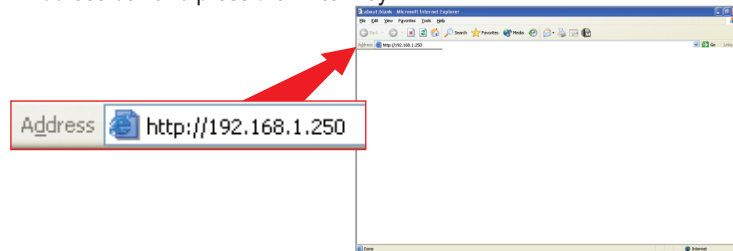
7

4. Configure the Access Point

The following set-up information is designed to help you to configure the Access Point to work with your existing Wired or Wireless network.

From a Wired PC

1. Open your Web browser and type **http://192.168.1.250** into the Address box and press the **Enter** key.



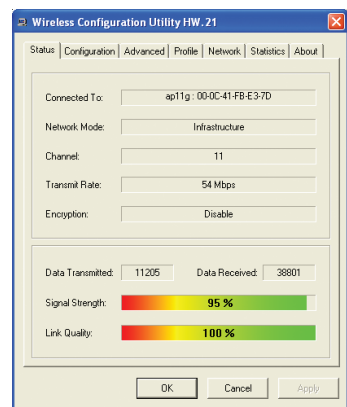
2. The logon pop-up screen will appear, type **admin** for the username and **admin** for the password then click **OK** to access the configuration page.



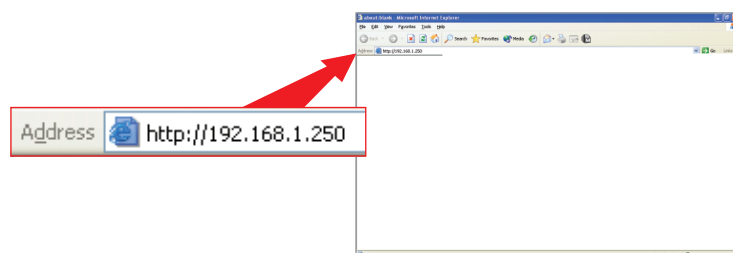
8

From a Wireless PC

1. Open up the Utility Program for your wireless card.
2. Configure the wireless card to have the SSID as **ap11g** and Channel as **6** and click on **Connect** to connect to the Access Point. (Example uses TRENDnet's TEW-421PC 802.11g Wireless PC Card).

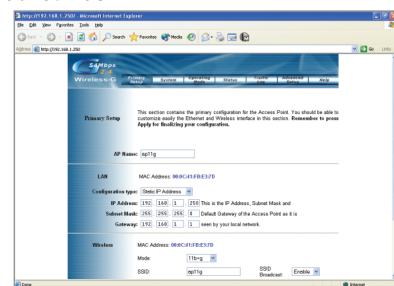


3. Then open your Web browser and type **http://192.168.1.250** into the Address box and press the **Enter** key.

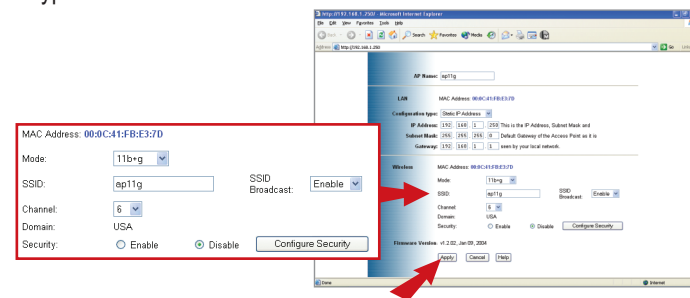


10

3. The configuration page will appear, then you can make changes on the Access Point to match your existing network's settings such as IP address and Subnet Mask.



4. Scroll down the page and you will see the Wireless section. If you already have a wireless network, please change the SSID/Channel or Encryption to match the other wireless devices.



5. After the changes have been made, click on the **Apply** button to save all the settings. Now the Access Point is configured and ready to use with your network.

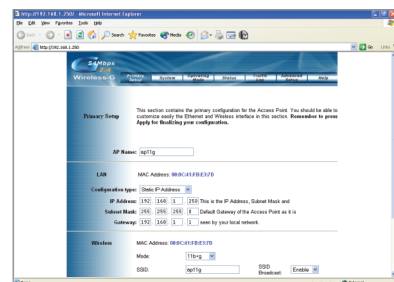
Note: If you cannot access the configuration page, please check your TCP/IP settings again. To find out more information on the Access Point features, please go through the User's Guide on the CD-ROM.

9

4. The logon pop-up screen will appear, type **admin** for the username and **admin** for the password then click **OK** to access the configuration page.

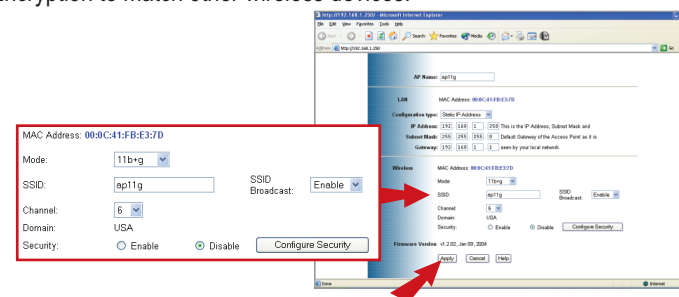


5. The configuration page will appear, then you can make changes on the Access Point to match your existing network's settings such as IP address and Subnet Mask. Please go through the User's Guide on the CD-ROM.



11

6. Scroll down the page, you will see the Wireless section. If you already have a wireless network, please change the SSID/Channel or Encryption to match other wireless devices.



7. After the changes, click on the **Apply** button to save all the settings and now the Access Point is configured and ready to use with your network.

Note: If you cannot access the configuration page, please check your TCP/IP settings again to find out more information on the Access Point features, please go through the user's Guide on the CD-ROM.

Important:

After the Access Point is configured correctly, if you have a DHCP server in your network and all client PCs require dynamic IP settings then please go back to the TCP/IP Properties and change the selection back to **Obtain an IP address automatically** option. Reboot the PC and the computer will receive a new IP address from your network.

12

Note: For more detail information about TEW-410APBplus's configuration and advanced settings, please find the information from the User's Guide on the CD-ROM.

If you still encounter problems settings up the router, we can help. Please have your Internet account information ready (ISP, Account Type) and contact us using the information indicated below.

Contact Technical Support

Telephone: +1-310-891-1100
Fax: +1-310-891-1111
Website: www.trendnet.com
E-mail: support@trendware.com

Technical Support Hours:

7:00AM ~ 6:00PM, Monday through Friday,
Pacific Standard Time (except holidays)

14

5. Troubleshooting

For advanced features please refer to the User's Guide located on your CD-ROM for configuration instructions.

Q1: The Access Point will not turn on. No LED's light up.

A1: The power might not be connected. Please connect the power adapter to the power outlet and check the LEDs again. Please note that using the wrong power adapter might physically damage the unit.

Q2: I cannot get to the configuration page of the TEW-410APBplus.

A2: Please make sure that your computer has a compatible IP address within the range of 192.168.1.x. You can also use the reset button located on the rear of the Access Point to revert to the default settings and try to connect to the Access Point again.

Q3: I cannot connect my wireless PCs to my network.

A3: Please make sure that the TEW-410APBplus has a valid IP Address/Subnet Mask that's from your existing network. And if you have a DHCP server in your network, please setup all the wireless PCs to have "**Obtain IP Address automatically**" settings under TCP/IP protocol properties to receive the IP correctly from the network.

13

15