

CSRS-PPP 3.54.2 (2022-11-10)



PTBM2350.230
PTBx

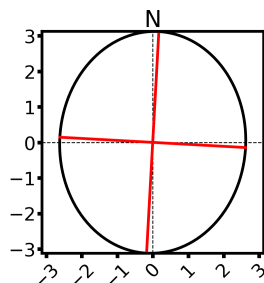
Data Start	Data End	Duration of Observations
2023-08-23 00:00:00.00	2023-08-23 23:59:30.00	23:59:30
Processing Time		Product Type
07:54:28 UTC 2023/08/24		NRCan Ultra-rapid
Observations	Frequency	Mode
Phase and Code	Double	Static
Elevation Cut-Off	Rejected Epochs	Fixed Ambiguities
7.5 degrees	0.00 %	91.71 %
Antenna Model	APC to ARP	ARP to Marker
Unknown	Unknown	H:0.000m / E:0.000m / N:0.000m

(APC = antenna phase center; ARP = antenna reference point)

Estimated Position for PTBM2350.230

	Latitude (+n)	Longitude (+e)	Ell. Height
ITRF20 (2023.6)	60° 10' 49.13107"	24° 49' 35.24024"	56.660 m
Sigmas(95%)	0.003 m	0.002 m	0.008 m
A priori*	60° 10' 49.10145"	24° 49' 35.37931"	59.644 m
Estimated – A priori	0.917 m	-2.144 m	-2.984 m

95% Error Ellipse (mm)
 semi-major: 3 mm
 semi-minor: 3 mm
 semi-major azimuth: 3° 10' 29.26"

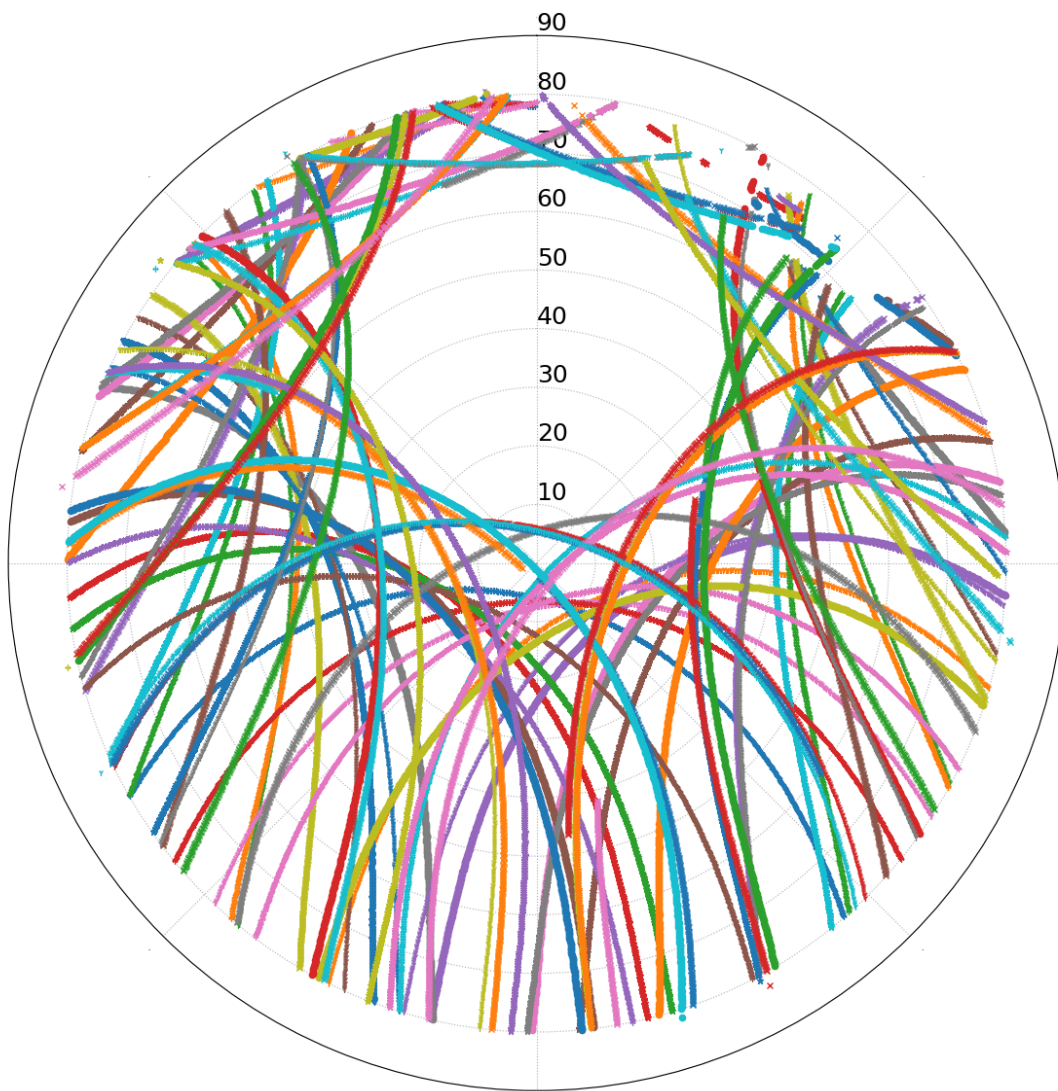


UTM (North)
Zone 35

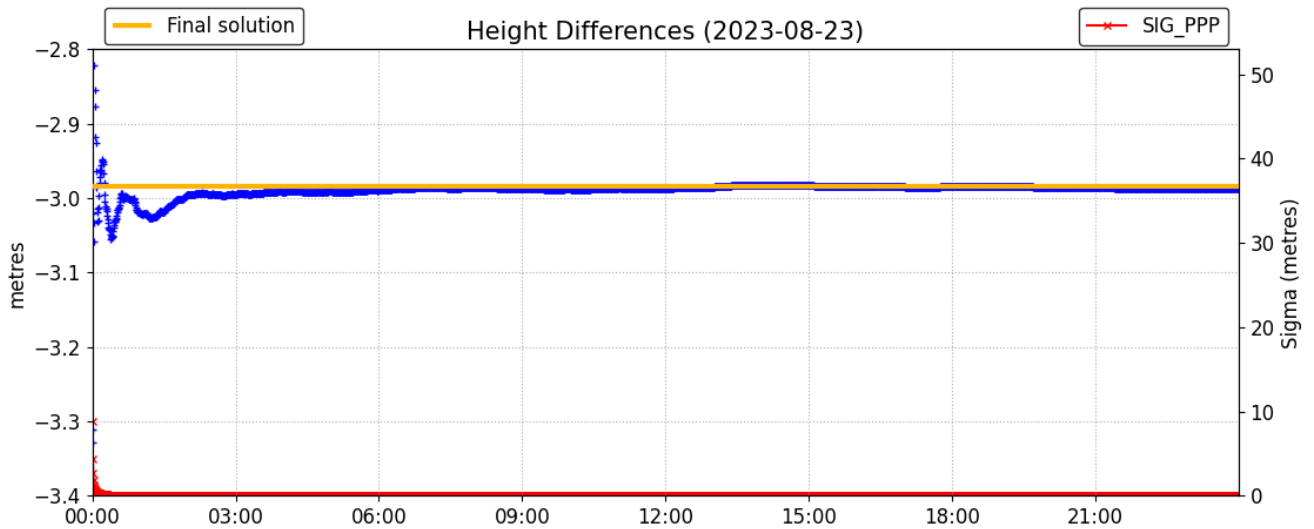
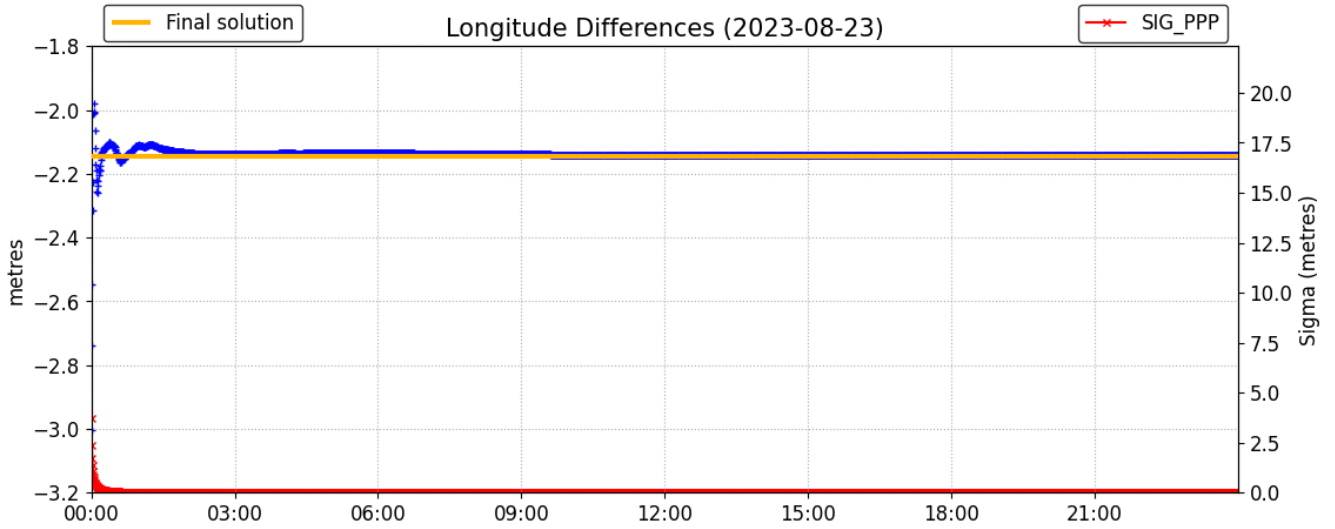
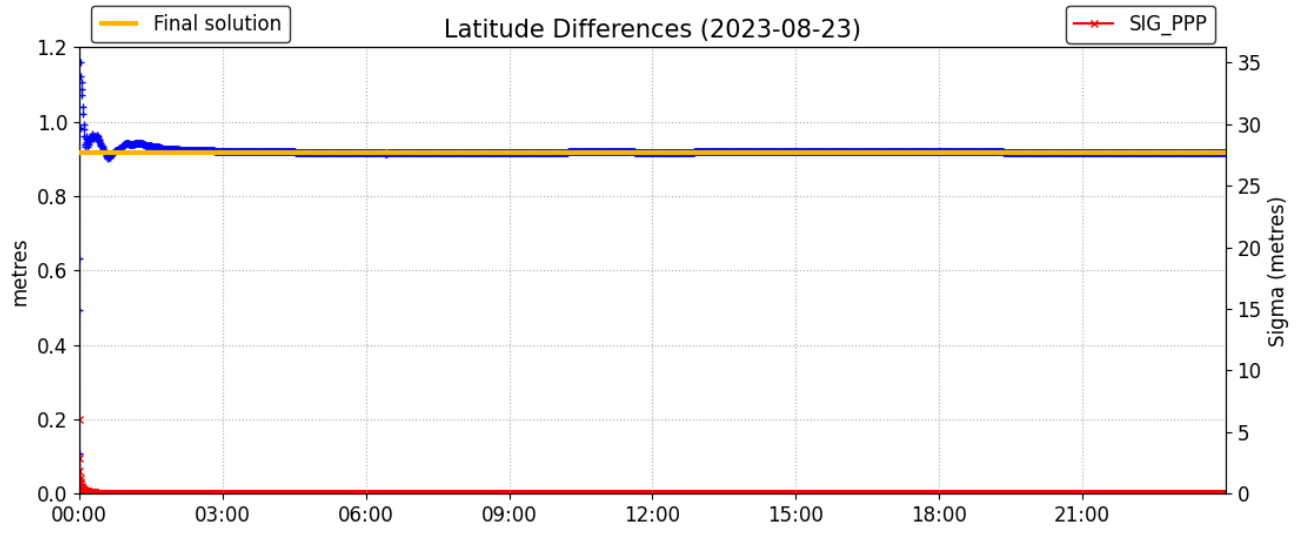
6673476.982 m (N)
 379439.681 m (E)
 Scale Factors
 0.99977812 (point)
 0.99976925 (combined)

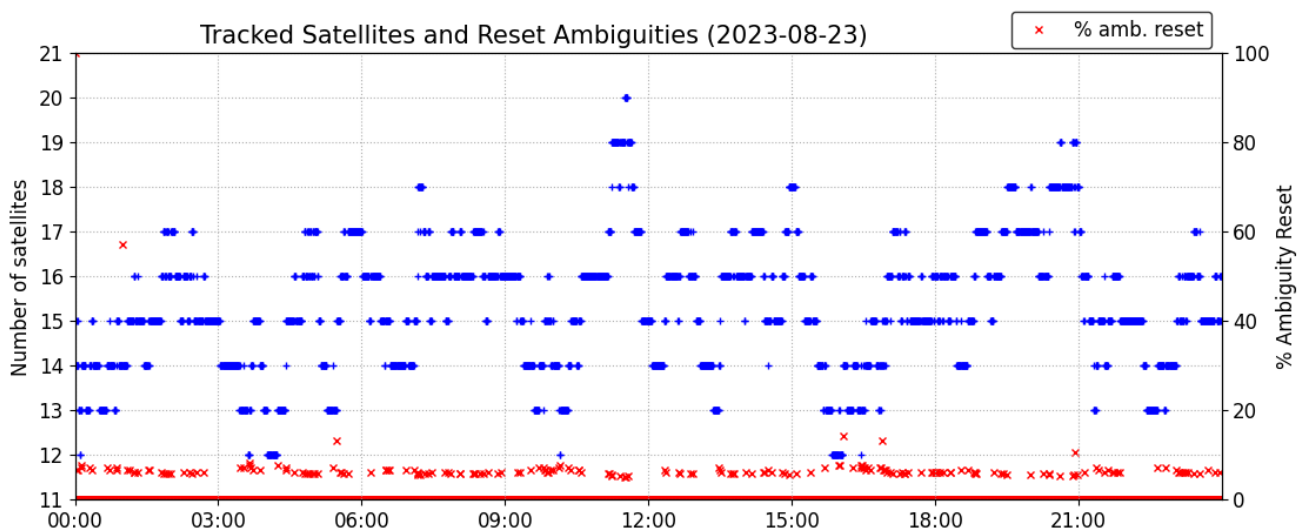
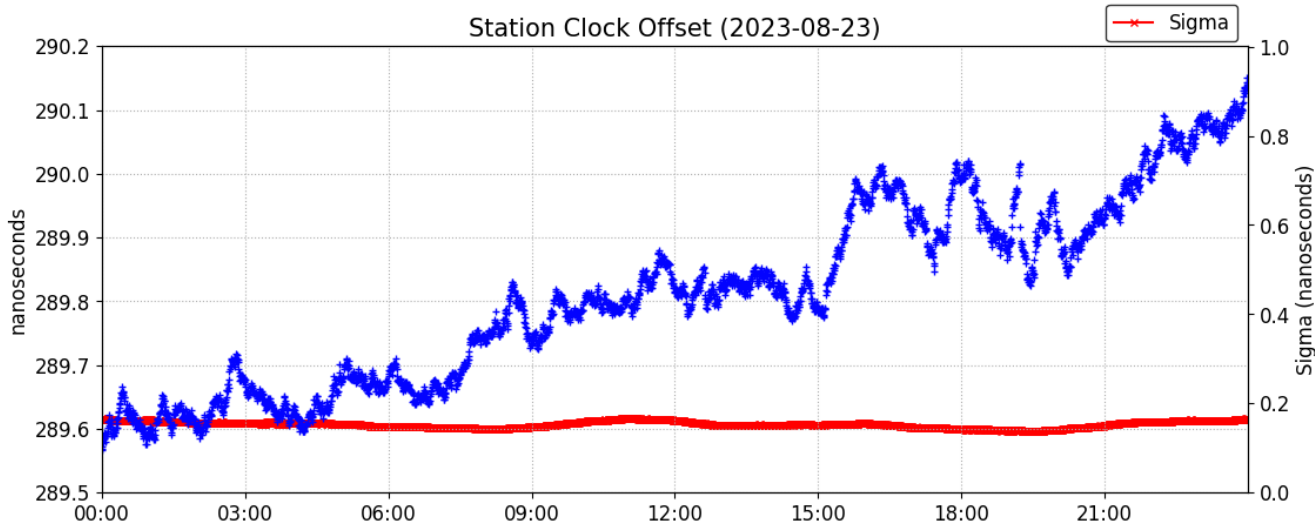
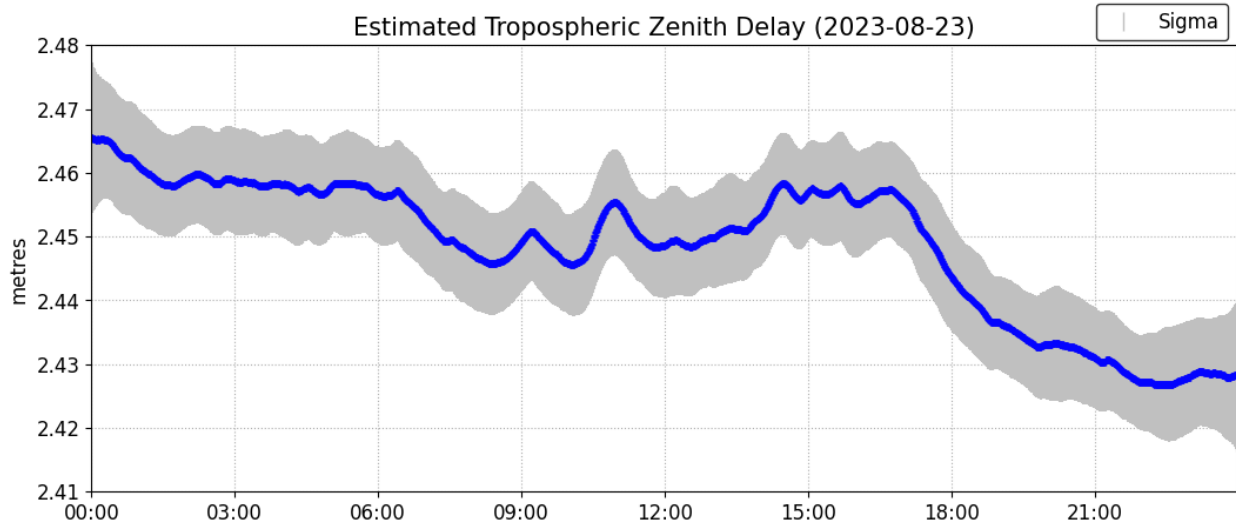
*(Coordinates from RINEX header used as a priori position)

Satellite Sky Distribution

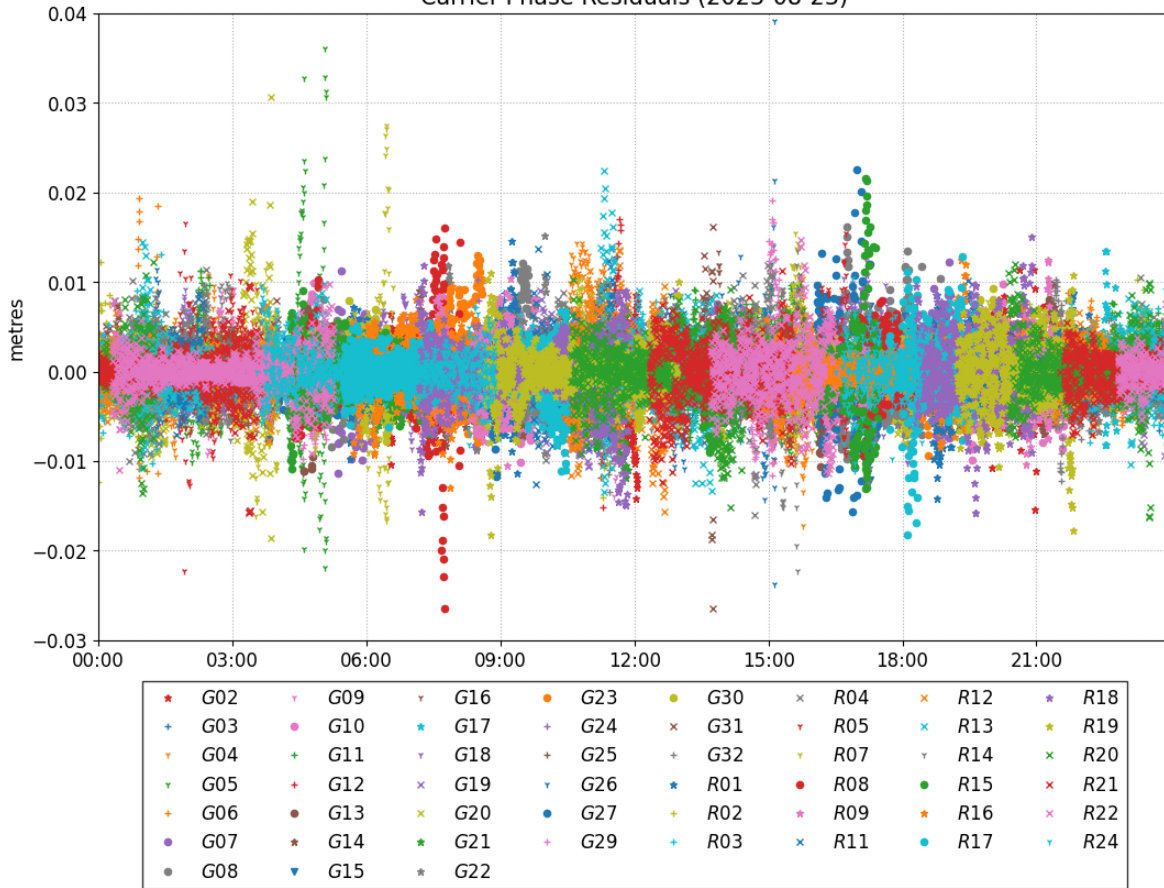


★	G02	+	G11	×	G20	●	G30	▼	R07	★	R16
+	G03	+	G12	★	G21	×	G31	●	R08	●	R17
▼	G04	●	G13	★	G22	+	G32	★	R09	★	R18
▼	G05	★	G14	●	G23	★	R01	×	R11	★	R19
+	G06	▼	G15	+	G24	+	R02	×	R12	×	R20
●	G07	▼	G16	+	G25	+	R03	×	R13	×	R21
●	G08	★	G17	▼	G26	×	R04	▼	R14	×	R22
▼	G09	▼	G18	●	G27	▼	R05	●	R15	▼	R24
●	G10	×	G19	+	G29						

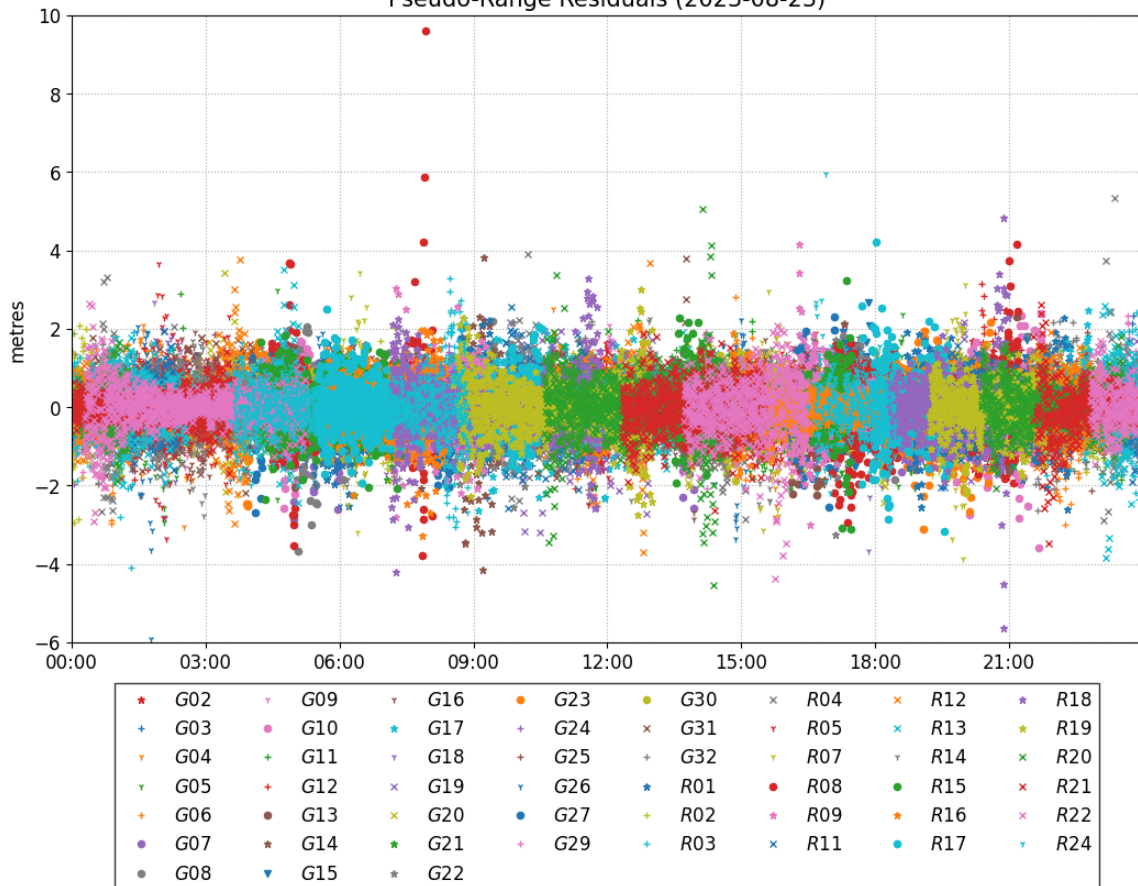




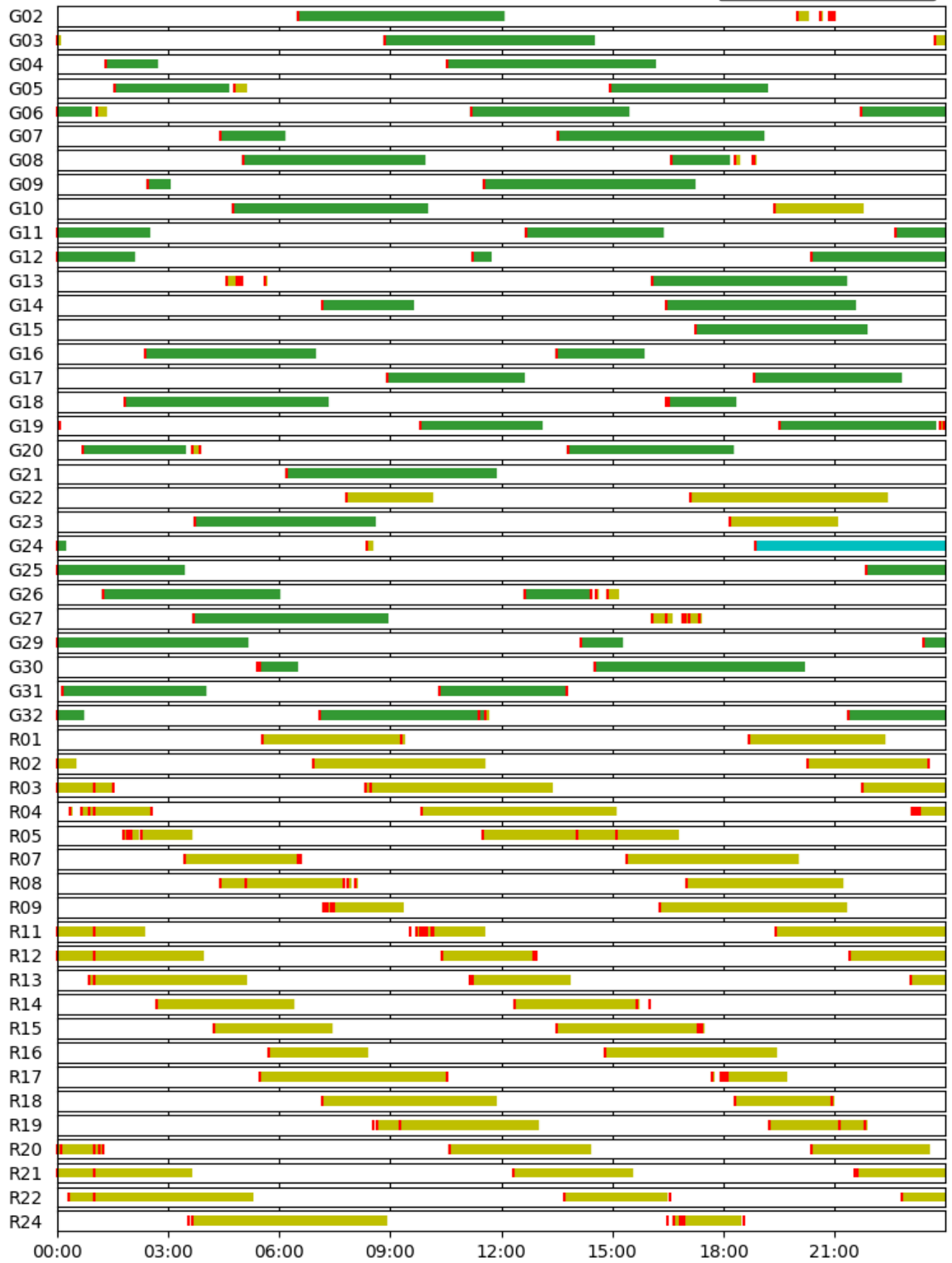
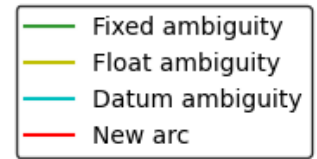
Carrier-Phase Residuals (2023-08-23)



Pseudo-Range Residuals (2023-08-23)



Phase Ambiguity Status (2023-08-23)



~~~ Disclaimer ~~~

Natural Resources Canada does not assume any liability deemed to have been caused directly or indirectly by any content of its CSRS-PPP online positioning service.

If you have any questions, please feel free to contact:

**Geodetic Integrated Services
Canadian Geodetic Survey
Surveyor General Branch
Natural Resources Canada
Government of Canada
588 Booth Street, Room 334
Ottawa, Ontario K1A 0Y7
Phone: 343-292-6617**

Email: geodeticinformation-informationgeodesique@nrcan-rncan.gc.ca



**Natural Resources
Canada**

**Ressources naturelles
Canada**

Canada