

CSRS-PPP 2.26.1 (2019-05-31)



PTBM3510.190
PTBx

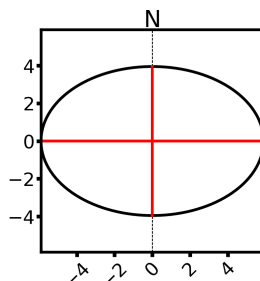
Data Start	Data End	Duration of Observations
2019-12-17 00:00:00.00	2019-12-17 23:59:30.00	23:59:30
Processing Time		Product Type
07:45:17 UTC 2019/12/18		NRCan Ultra-rapid
Observations	Frequency	Mode
Phase and Code	Double	Static
Elevation Cut-Off	Rejected Epochs	Estimation Steps
7.5 degrees	0.00 %	30.00 sec
Antenna Model	APC to ARP	ARP to Marker
Unknown	Unknown	H:0.000m / E:0.000m / N:0.000m

(APC = antenna phase center; ARP = antenna reference point)

Estimated Position for PTBM3510.190

	Latitude (+n)	Longitude (+e)	Ell. Height
ITRF14 (2019.9)	60° 10' 49.12185"	24° 49' 35.13413"	56.636 m
Sigmas(95%)	0.003 m	0.005 m	0.010 m
A priori*	60° 10' 49.06526"	24° 49' 35.12019"	57.760 m
Estimated – A priori	1.751 m	0.215 m	-1.124 m

95% Error Ellipse (mm)
 semi-major: 6 mm
 semi-minor: 4 mm
 semi-major azimuth: 89° 59' 59.89"



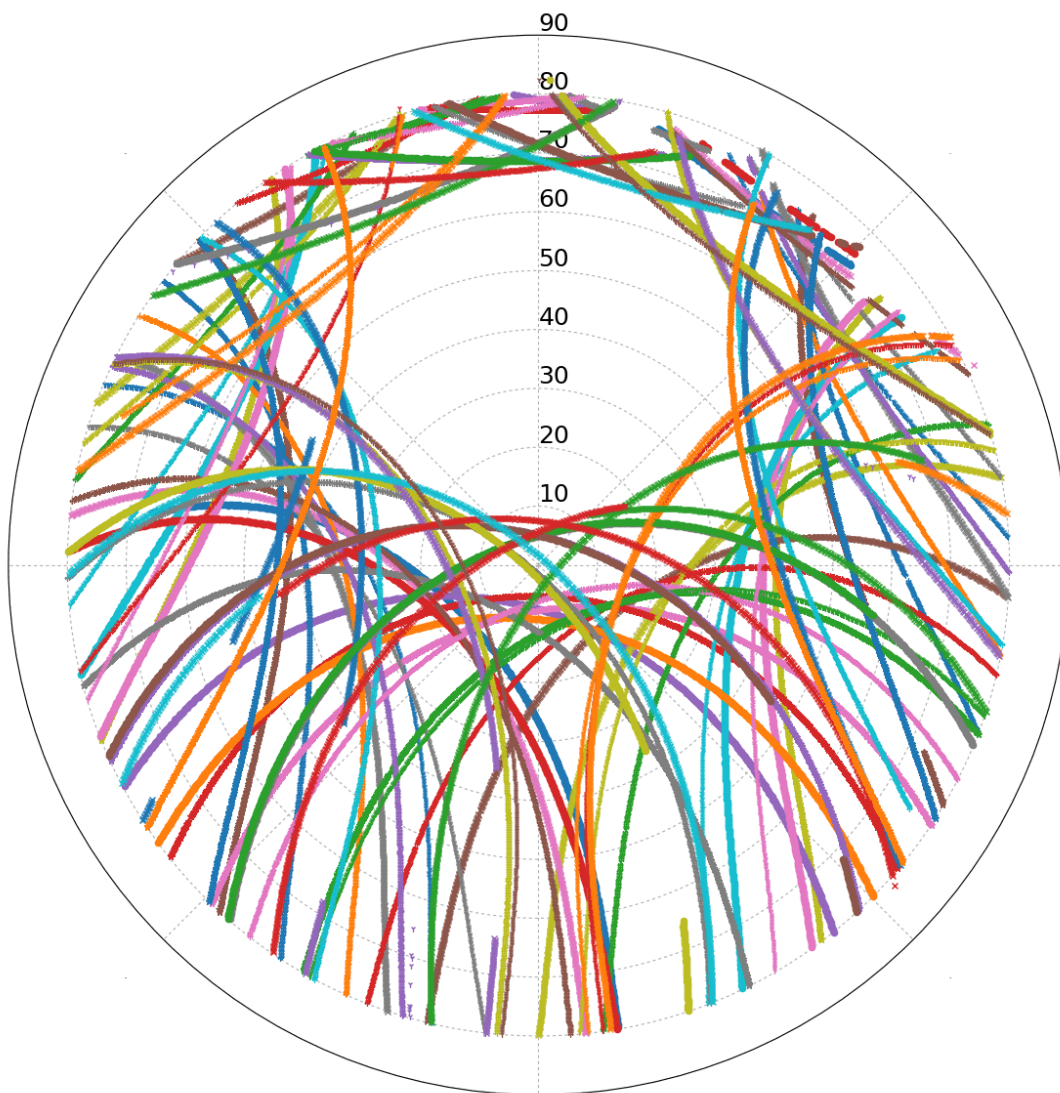
UTM (North)
Zone 35

6673476.751 m (N)
379438.037 m (E)

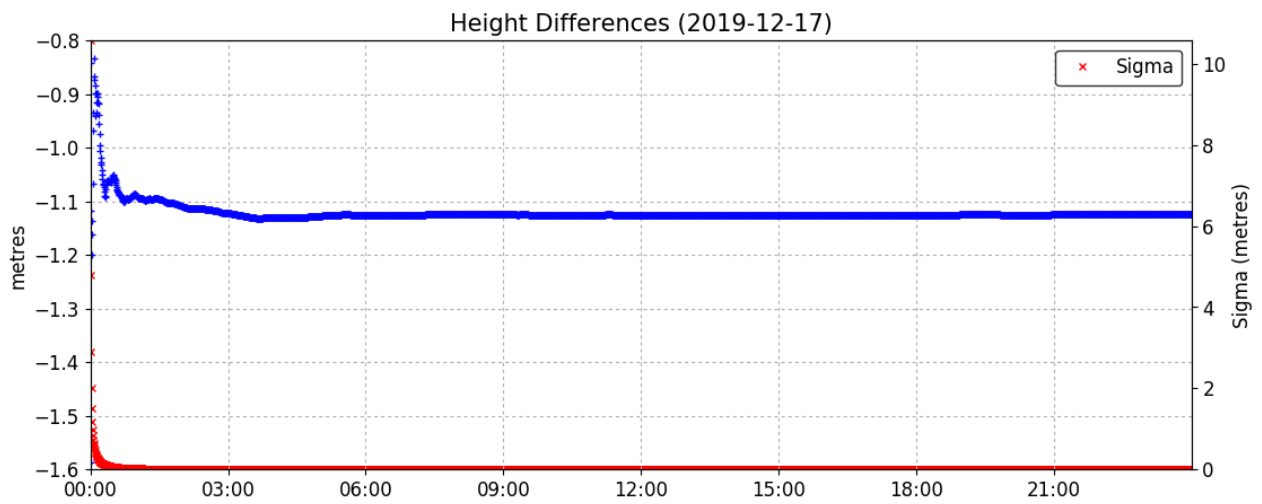
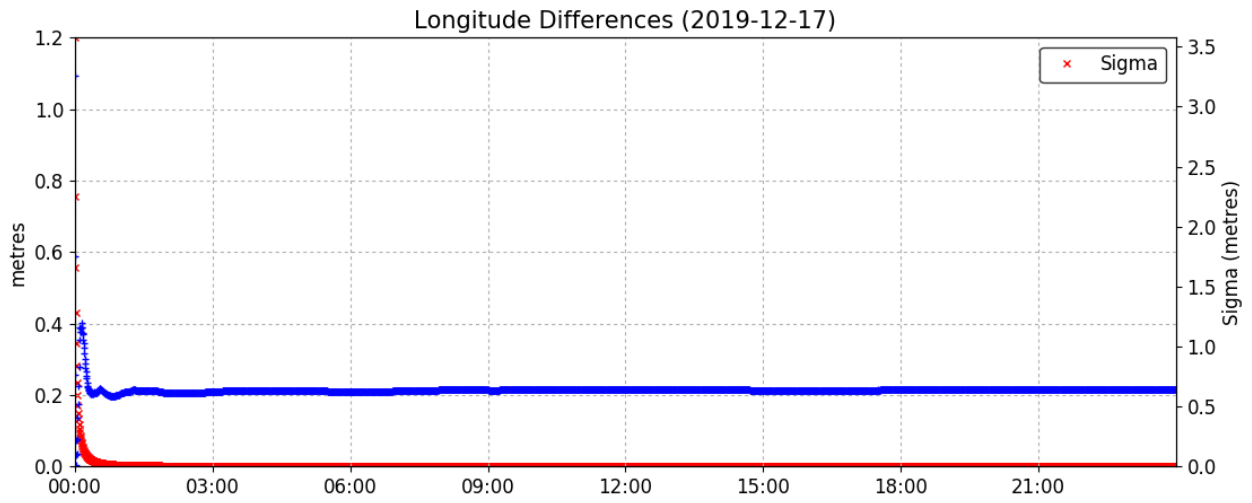
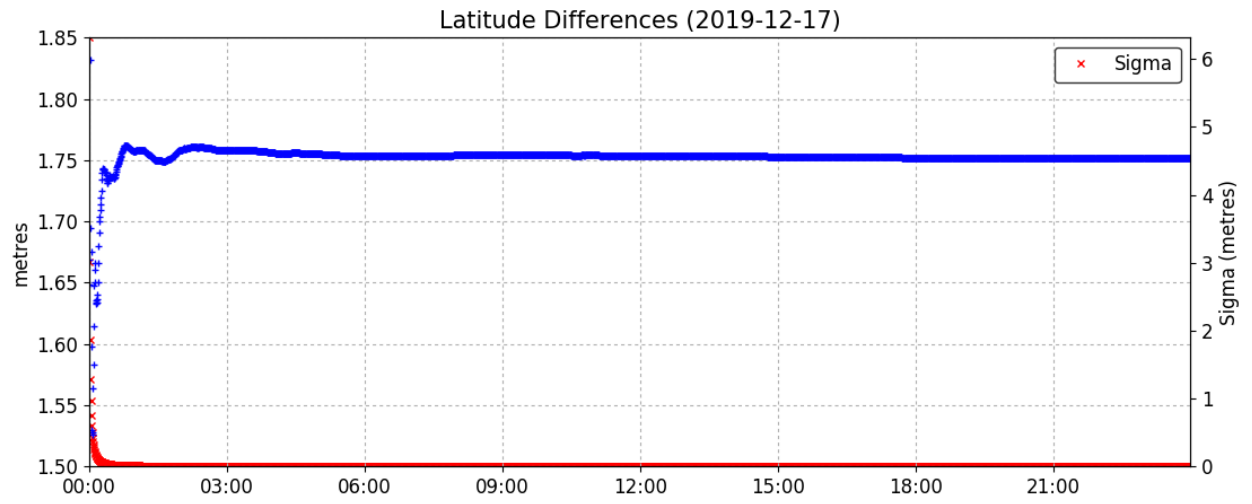
Scale Factors
0.999778 (point)
0.999769 (combined)

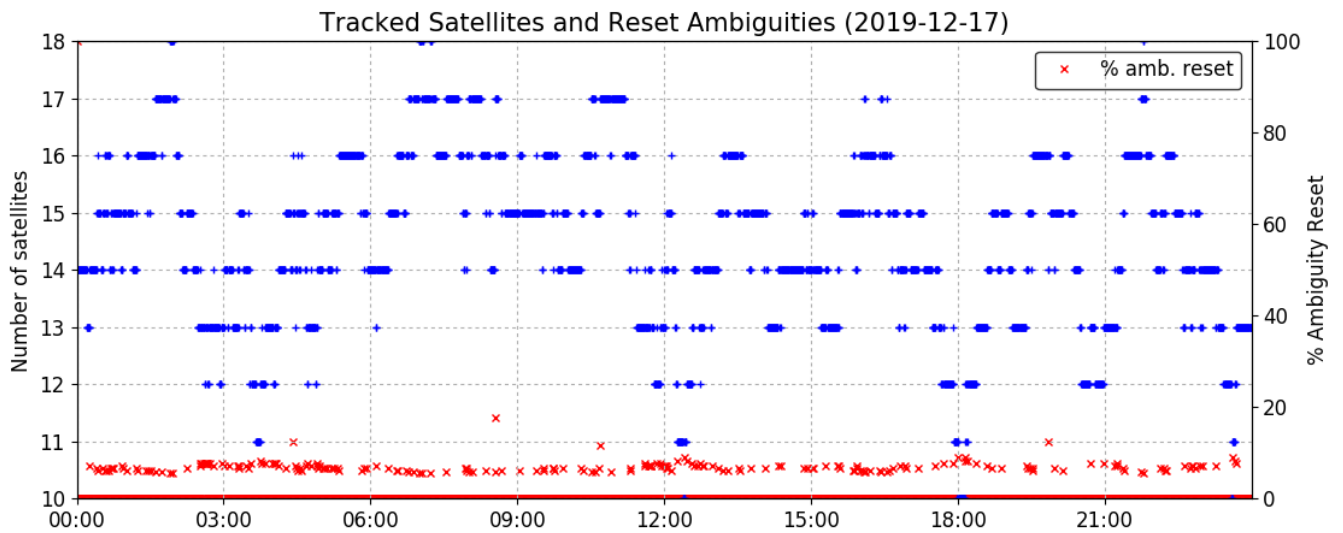
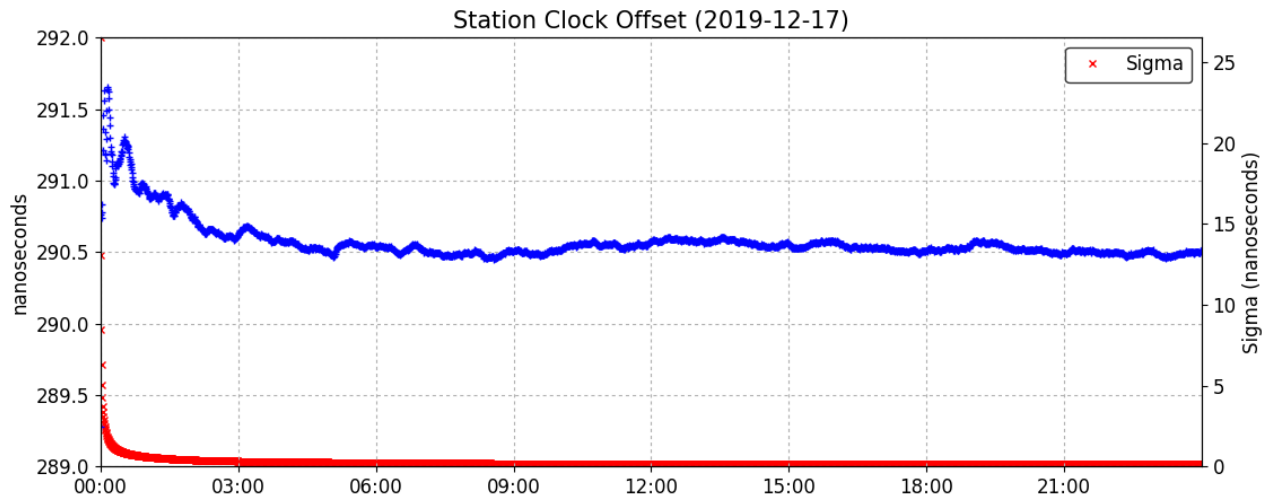
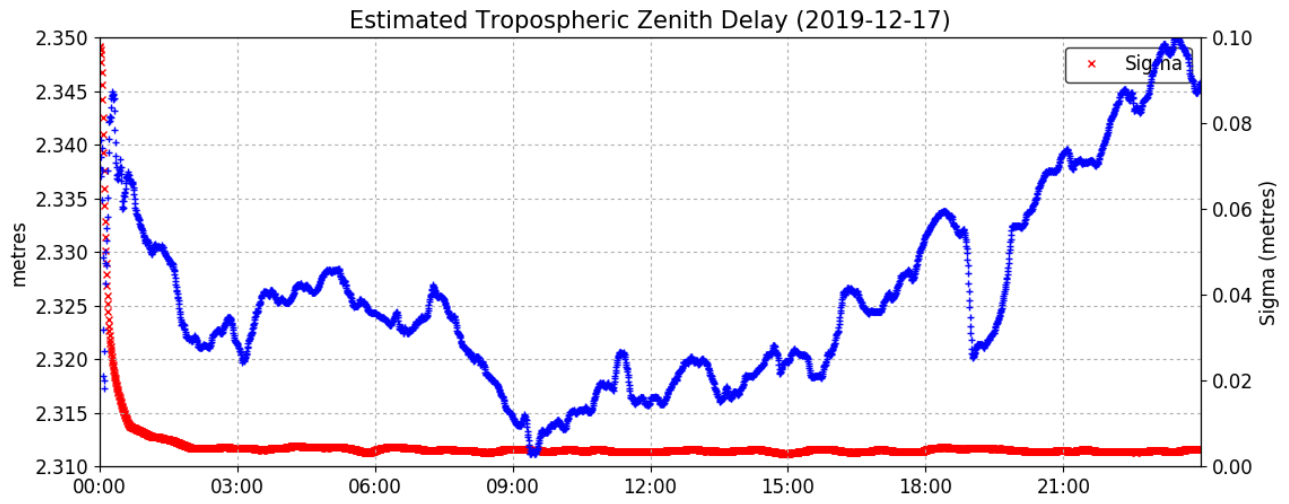
*(Coordinates from RINEX header used as a priori position)

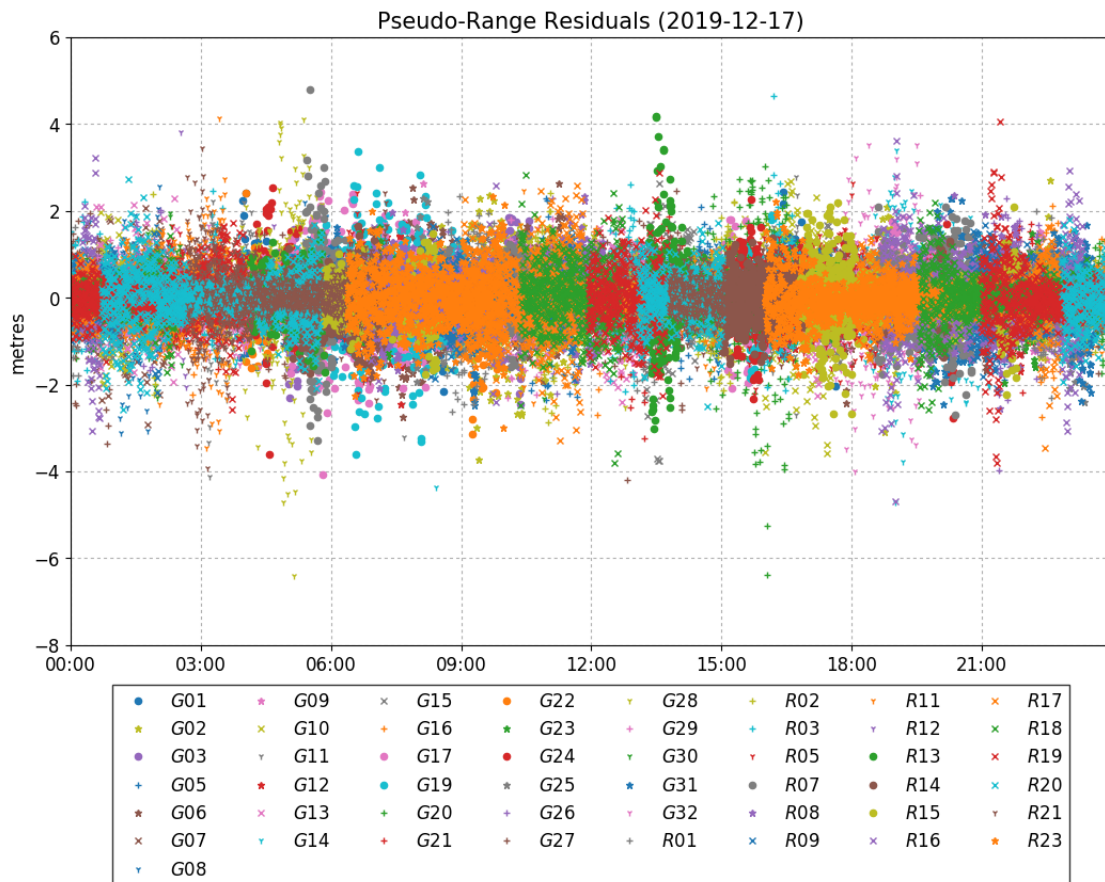
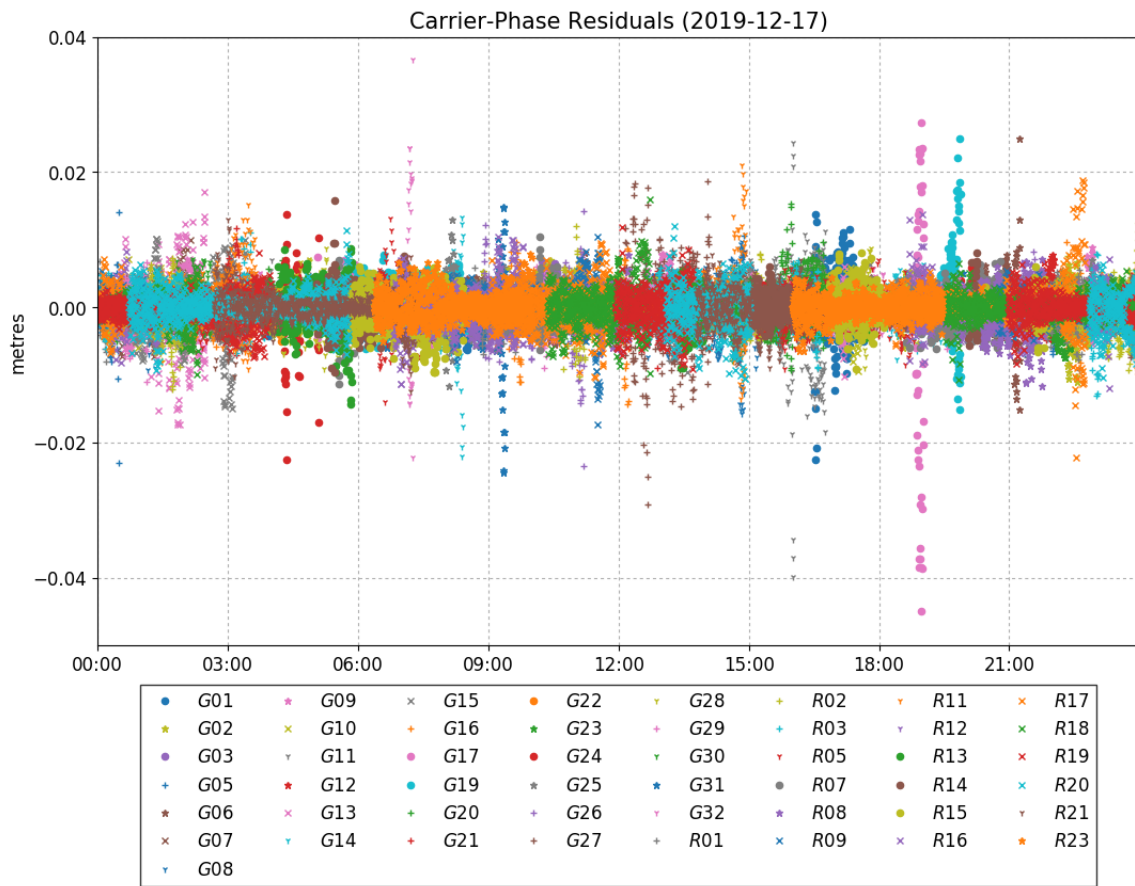
Satellite Sky Distribution



• G01	▽ G11	+ G20	▽ G28	▽ R05	• R15
• G02	• G12	+ G21	+ G29	• R07	× R16
• G03	× G13	• G22	▽ G30	• R08	× R17
+ G05	▽ G14	• G23	• G31	× R09	× R18
• G06	× G15	• G24	▽ G32	▽ R11	× R19
× G07	+ G16	• G25	+ R01	▽ R12	× R20
▽ G08	• G17	+ G26	+ R02	• R13	▽ R21
• G09	• G19	+ G27	+ R03	• R14	• R23
× G10					







~~~ Disclaimer ~~~

Natural Resources Canada does not assume any liability deemed to have been caused directly or indirectly by any content of its CSRS-PPP online positioning service.

If you have any questions, please feel free to contact:

**Geodetic Integrated Services
Canadian Geodetic Survey
Surveyor General Branch
Natural Resources Canada
Government of Canada
588 Booth Street, Room 334
Ottawa, Ontario K1A 0Y7
Phone: 343-292-6617**

Email: nrcan.geodeticinformation-informationgeodesique.rncan@canada.ca



**Natural Resources
Canada**

**Ressources naturelles
Canada**

Canada