

# CSRS-PPP 2.26.1 (2019-05-31)



**MI053500.19o**  
**MI05**

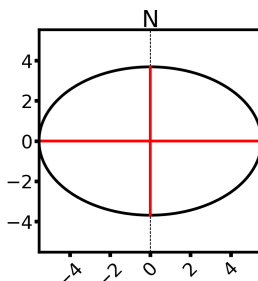
<b>Data Start</b>	<b>Data End</b>	<b>Duration of Observations</b>
2019-12-16 00:00:00.00	2019-12-16 23:59:30.00	23:59:30
<b>Processing Time</b>		<b>Product Type</b>
05:38:19 UTC 2019/12/17		NRCan Ultra-rapid
<b>Observations</b>	<b>Frequency</b>	<b>Mode</b>
Phase and Code	Double	Static
<b>Elevation Cut-Off</b>	<b>Rejected Epochs</b>	<b>Estimation Steps</b>
7.5 degrees	0.00 %	30.00 sec
<b>Antenna Model</b>	<b>APC to ARP</b>	<b>ARP to Marker</b>
TWIVP6050_CONE NONE	L1 = 0.102 m L2 = 0.100 m	H:0.000m / E:0.000m / N:0.000m

(APC = antenna phase center; ARP = antenna reference point)

## Estimated Position for MI053500.19o

	<b>Latitude (+n)</b>	<b>Longitude (+e)</b>	<b>Ell. Height</b>
<b>ITRF14 (2019.9)</b>	60° 10' 49.31459"	24° 49' 35.43754"	60.170 m
<b>Sigmas(95%)</b>	0.003 m	0.004 m	0.009 m
<b>A priori*</b>	60° 10' 49.31663"	24° 49' 35.40332"	60.988 m
<b>Estimated – A priori</b>	-0.063 m	0.528 m	-0.818 m

**95% Error Ellipse (mm)**  
 semi-major: 6 mm  
 semi-minor: 4 mm  
 semi-major azimuth: 89° 59' 59.88"



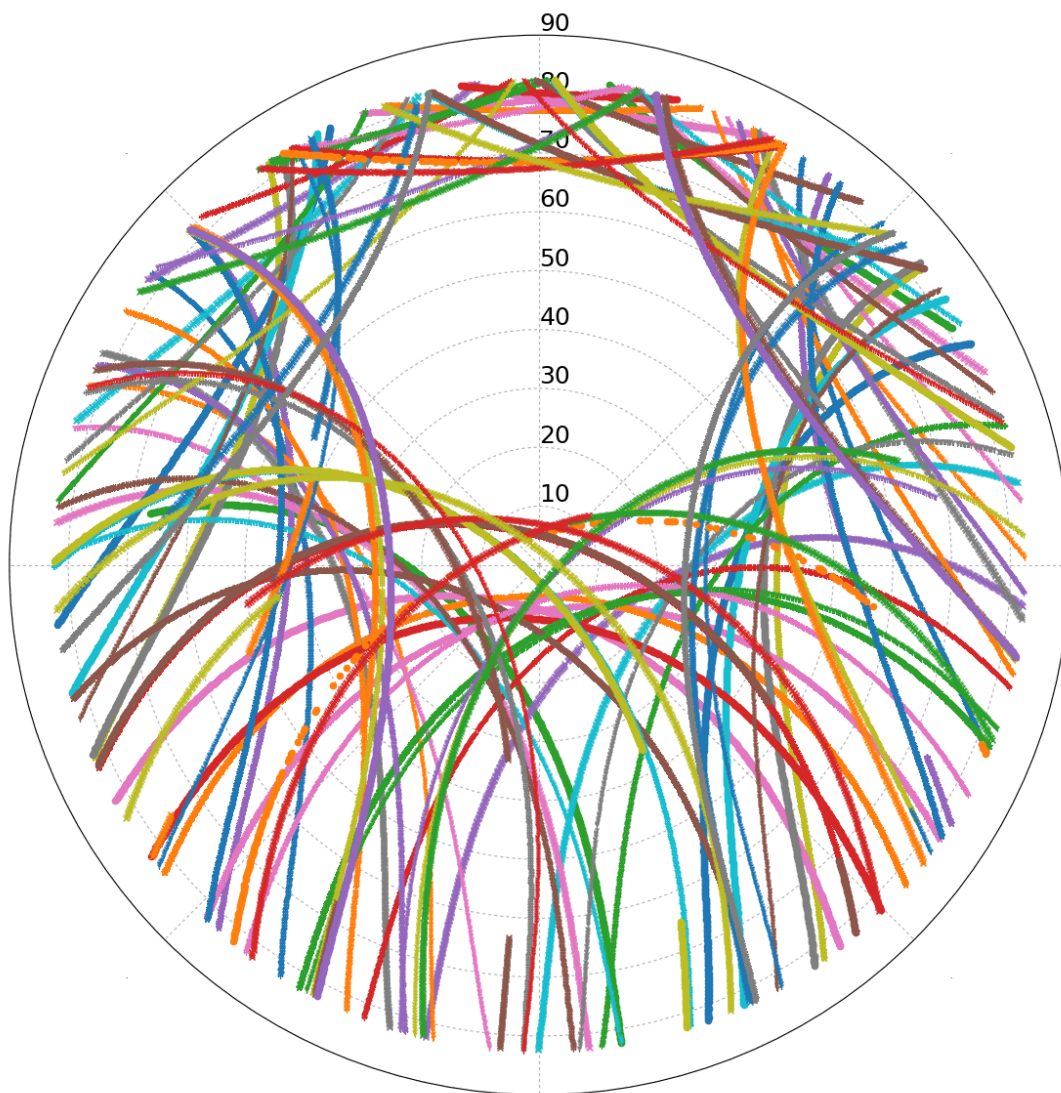
**UTM (North)**  
**Zone 35**

6673482.557 m (N)  
379442.907 m (E)

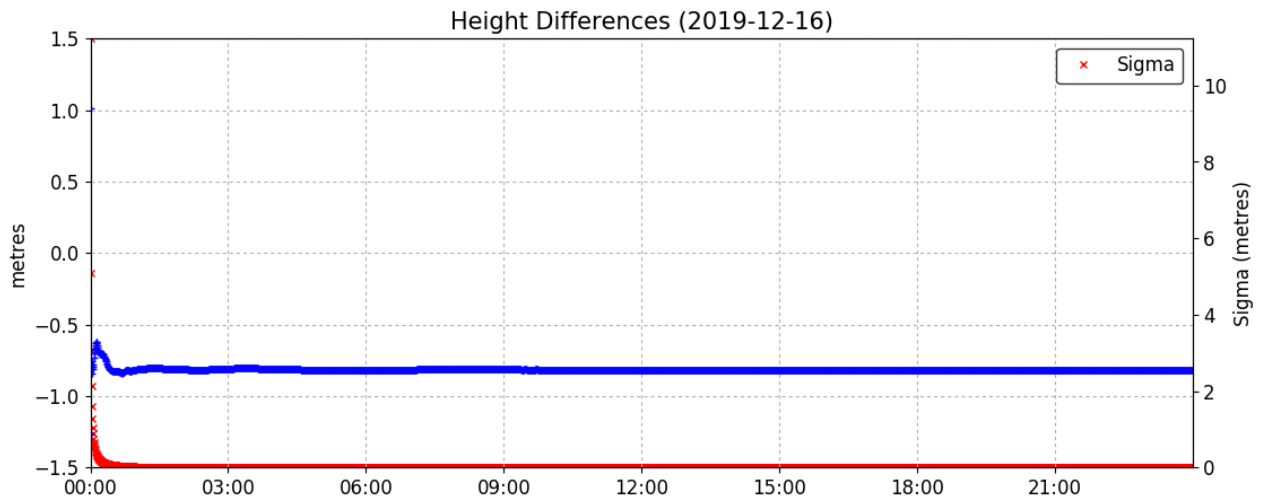
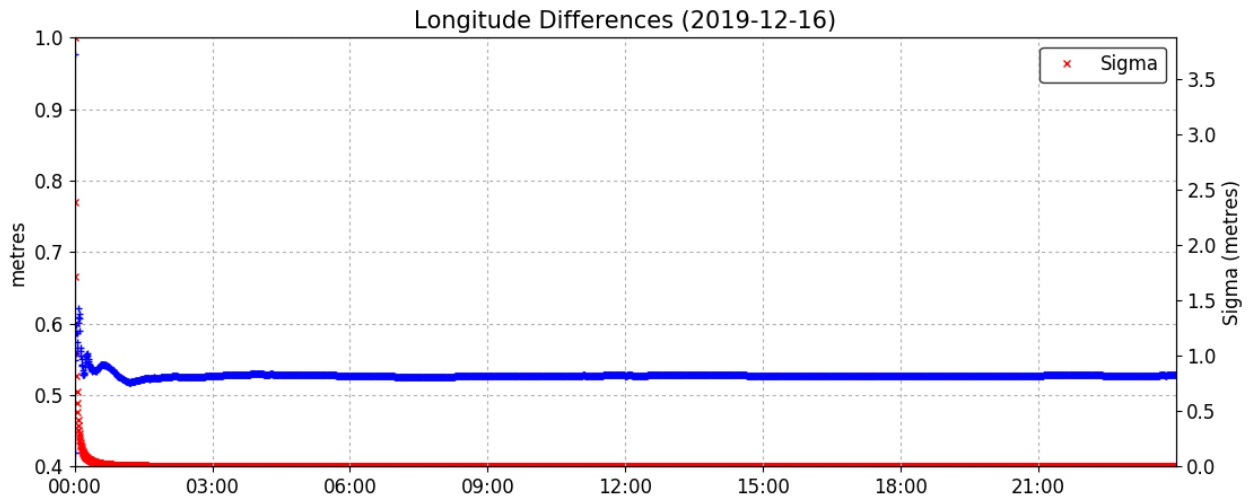
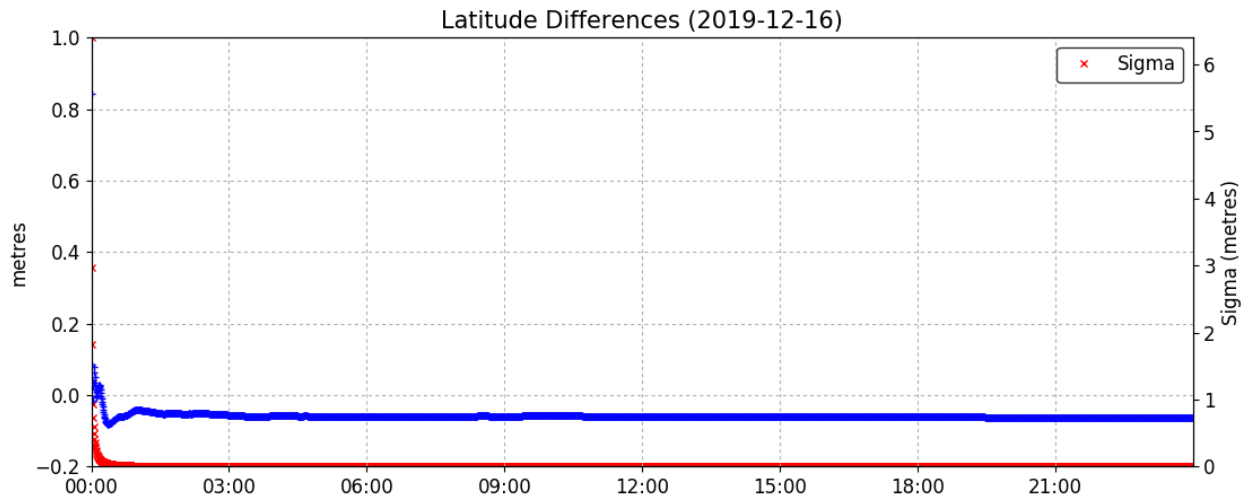
Scale Factors  
0.999778 (point)  
0.999769 (combined)

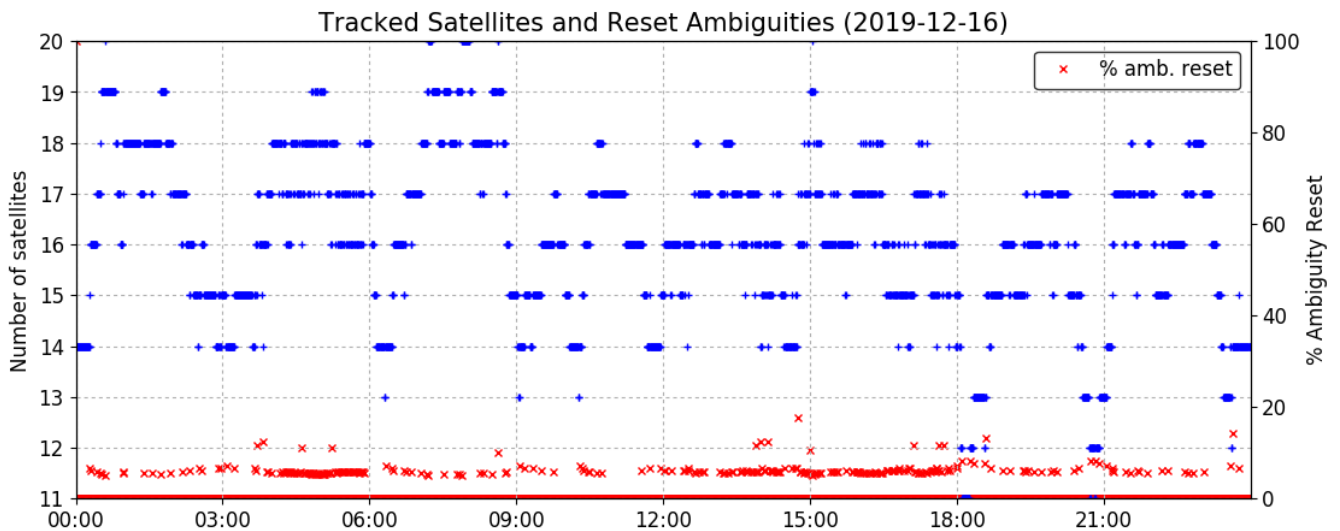
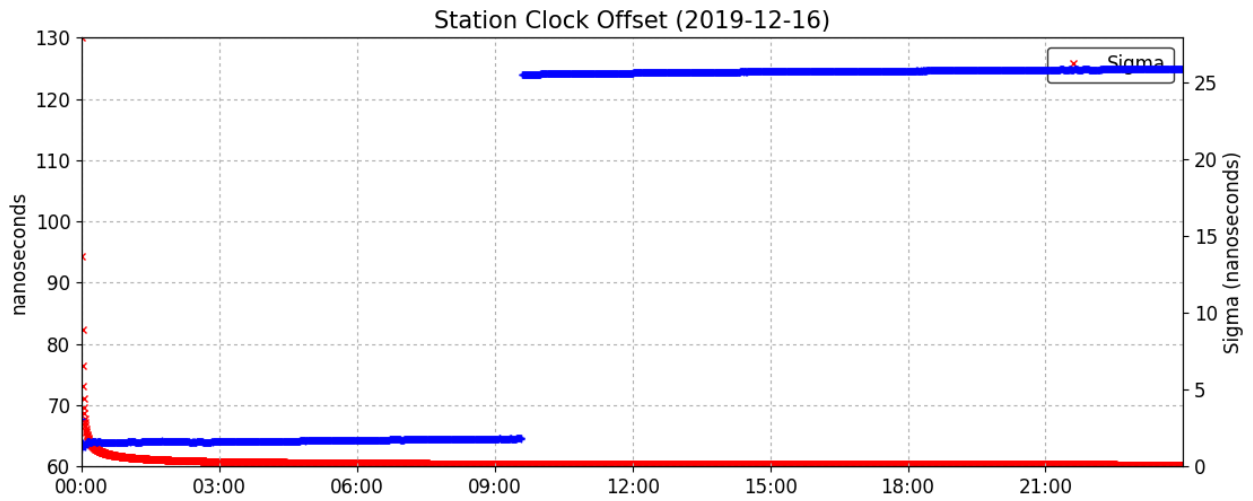
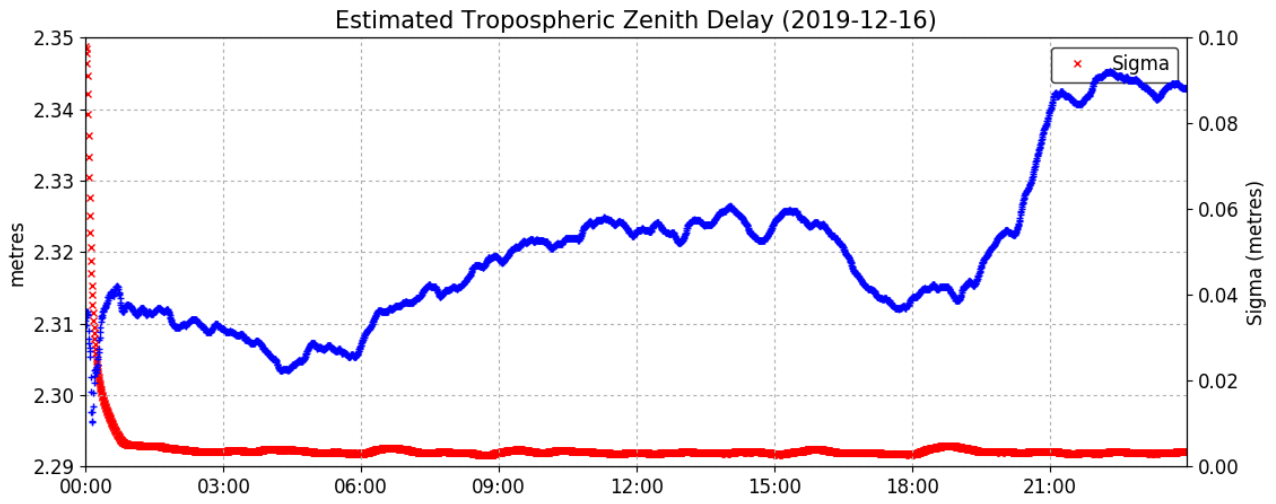
\*(Coordinates from RINEX header used as a priori position)

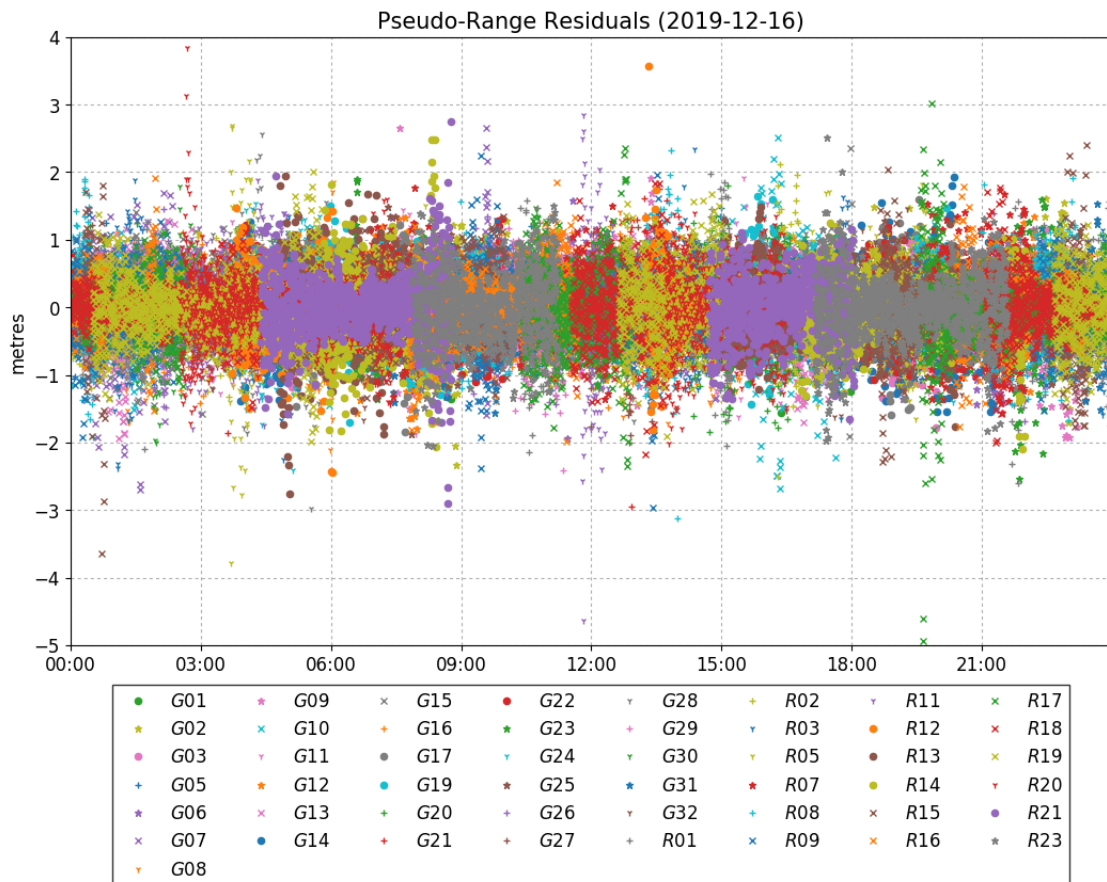
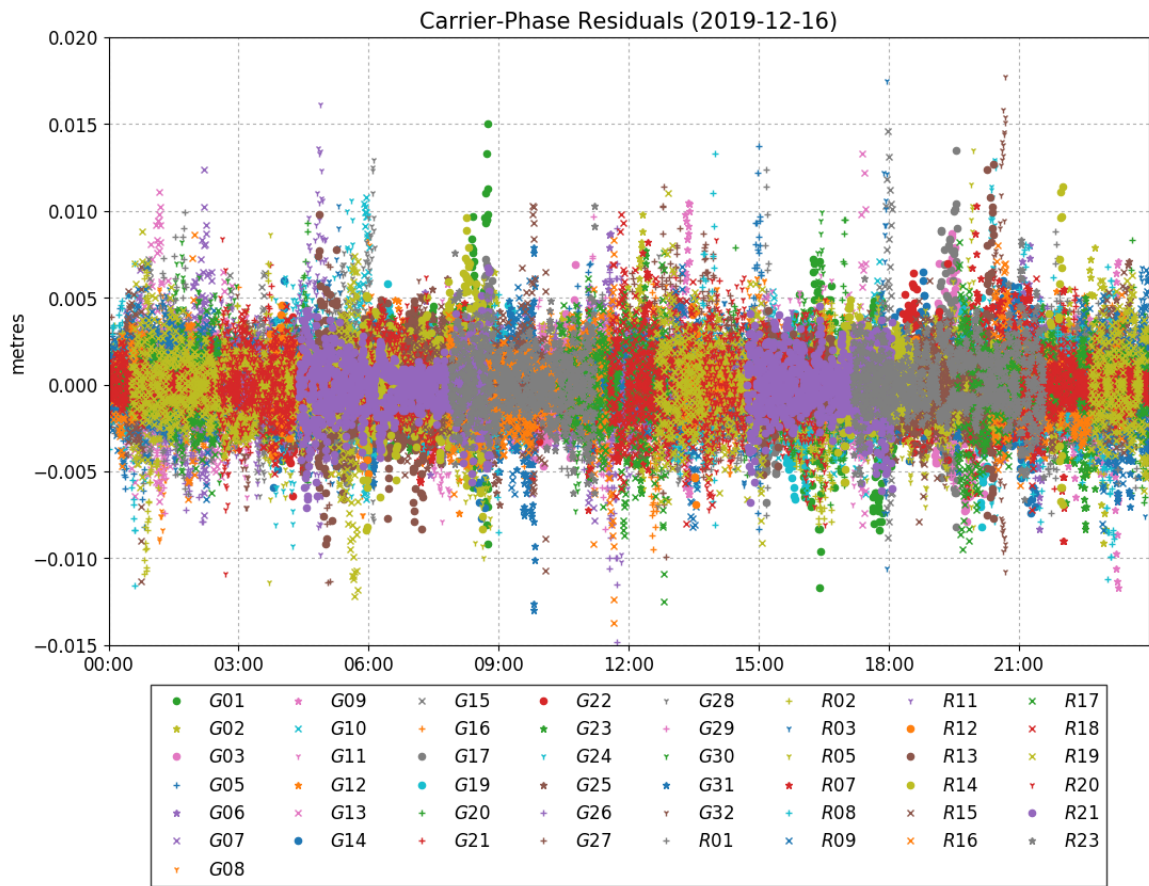
### Satellite Sky Distribution



● G01	▽ G11	◆ G20	▽ G28	▽ R05	× R15
● G02	● G12	◆ G21	◆ G29	◆ R07	× R16
● G03	× G13	● G22	▽ G30	◆ R08	× R17
◆ G05	● G14	◆ G23	◆ G31	× R09	× R18
◆ G06	× G15	▽ G24	▽ G32	▽ R11	× R19
× G07	◆ G16	◆ G25	◆ R01	● R12	▽ R20
▽ G08	● G17	◆ G26	◆ R02	● R13	● R21
◆ G09	● G19	◆ G27	▽ R03	● R14	● R23
× G10					







**~~~ Disclaimer ~~~**

**Natural Resources Canada does not assume any liability deemed to have been caused directly or indirectly by any content of its CSRS-PPP online positioning service.**

**If you have any questions, please feel free to contact:**

**Geodetic Integrated Services  
Canadian Geodetic Survey  
Surveyor General Branch  
Natural Resources Canada  
Government of Canada  
588 Booth Street, Room 334  
Ottawa, Ontario K1A 0Y7  
Phone: 343-292-6617**

**Email: [nrcan.geodeticinformation-informationgeodesique.rncan@canada.ca](mailto:nrcan.geodeticinformation-informationgeodesique.rncan@canada.ca)**



**Natural Resources  
Canada**

**Ressources naturelles  
Canada**

**Canada**